

**CULTURAL RESOURCE ASSESSMENT  
OF THE FOULKS RANCH PROJECT  
CITY OF ELK GROVE,  
SACRAMENTO COUNTY, CALIFORNIA**

Prepared by

**Peak & Associates, Inc.**  
3941 Park Drive, Suite 20, #329  
El Dorado Hills, CA 95762

Prepared for

**Gerry N. Kamilos**  
11211 Gold Country Blvd., Suite 108  
Gold River, CA 95670

April 4, 2005  
(Job # 03-127)

## INTRODUCTION

The Foulks Ranch Project encompasses a total of about 7.81 acres proposed for residential development. The property is accessed from Elk Grove Boulevard, the southern boundary of the property, and is about one quarter of a mile west of Bruceville Road.

The project area is located in Section 34, Township 7 North, Range 5 East and is mapped on the Florin USGS 7.5' topographic quadrangle. The Florin quadrangle is the base for Map 1. The project area currently contains a number of buildings related to agriculture, from when the property was part of a working farm, as well as residences.

Melinda Peak served as the principal investigator for the project, with Robert Gerry assisting in the field recordation of the building complex (resumes, Appendix 1).

## CULTURAL HISTORY

### Archeological Background

The Sacramento Delta was one of the first regions in California to attract intensive archeological fieldwork. Between 1893 and 1901, avocational archeologist J. A. Barr excavated many prehistoric mounds in the Stockton area. He collected nearly 2000 artifacts during the course of his investigations. H. C. Meredith was another avocational archeologist of the period who pursued collecting in the same Stockton locality. Meredith (1899, 1900) did publish a compilation of his own and Barr's findings, and these appear to constitute the earliest accounts of Delta archeology. Holmes (1902), from the Smithsonian Institution, further elaborated on the Delta or "Stockton District" archeology, presenting illustrations of artifacts collected by Meredith and Barr.

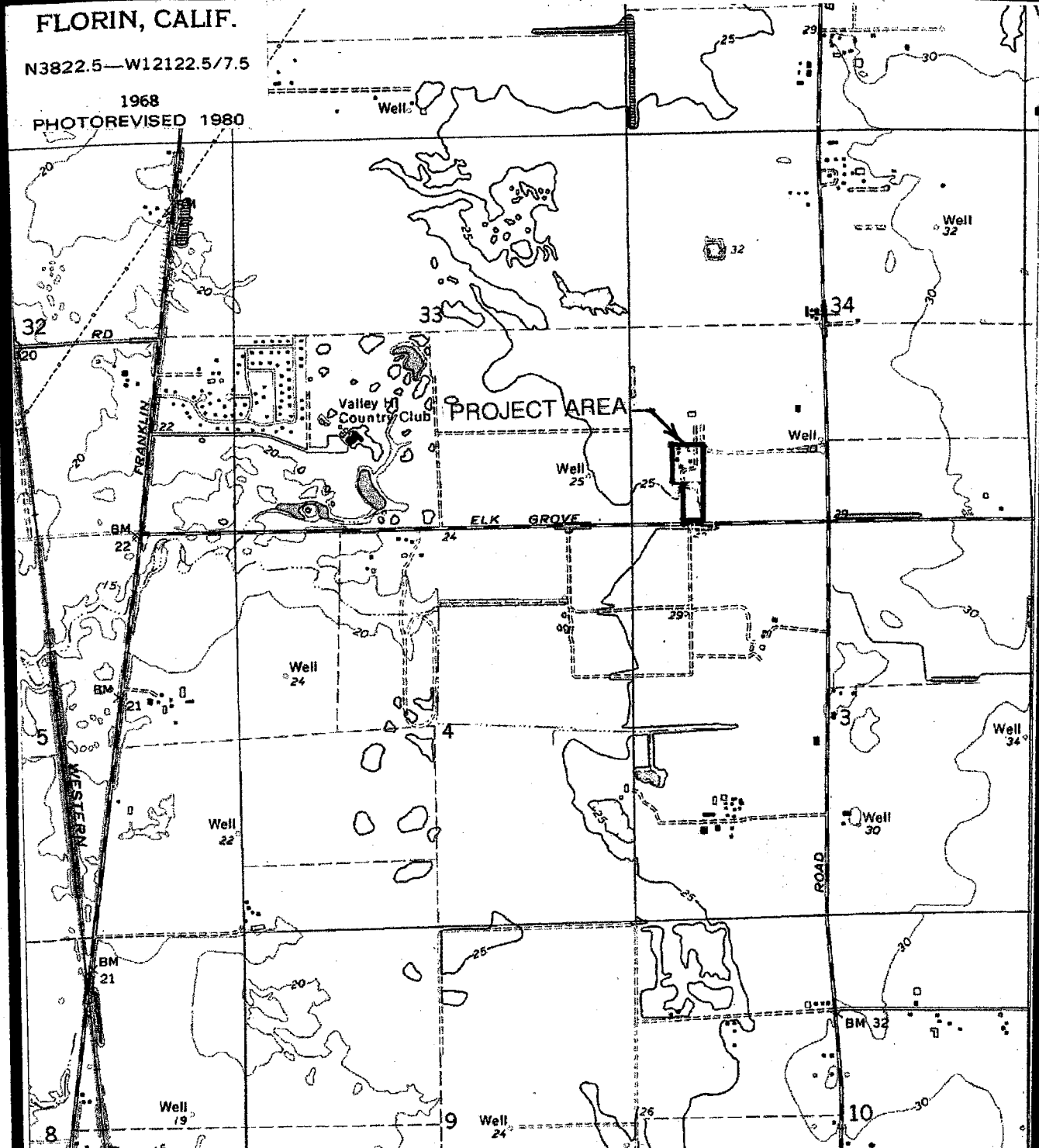
It was Elmer J. Dawson who first recognized culture changes through time in delta archeology. Though he was an amateur archeologist, Dawson understood the necessity of keeping accurate notes on grave associations and provenience of artifacts. He collaborated with W. E. Schenck to produce an overview of northern San Joaquin Valley archeology (Schenck and Dawson 1929). The overview contained information on more than 90 prehistoric sites as well as data on previous collections.

By 1931, the focus of archeological work was directed toward the Cosumnes River locality, where survey and exploration were conducted by Sacramento Junior College (Lillard and Purves 1936). Excavations, especially at the stratified Windmiller mound (CA-SAC-107), suggested three temporally distinct cultural traditions: Early, Transitional, and Late. Information grew as a result of excavations at other mounds in the Delta and lower Sacramento Valley by Sacramento Junior College and the University of California, Berkeley (Lillard, Heizer and Fenenga 1939).

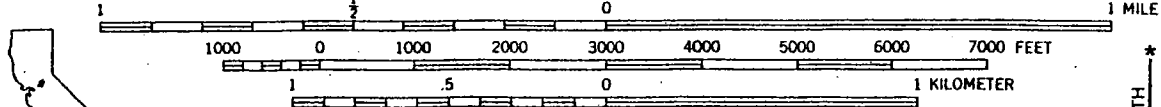
# FLORIN, CALIF.

N3822.5—W12122.5/7.5

1968  
PHOTOREVISED 1980



SCALE 1:24 000



CONTOUR INTERVAL 5 FEET

QUADRANGLE LOCATION

BASE MAP IS MAPPED EDITED AND PUBLISHED BY THE U. S. GEOLOGICAL SURVEY

TRUE NORTH  
MAG NORTH 17°

MAP 1

Previous investigations in the project region have focused upon very detailed archival research of Spanish sources (Bennyhoff 1977), and the archeological investigations at a number of small sites (Schulz, Abels and Ritter 1979; Schulz and Simons 1973; Soule 1976). A reexamination of earlier work has also been undertaken (Ragir 1972; Schulz 1981; Doran 1980). Several of the previously investigated sites probably represent satellite encampments or small villages associated with major villages.

The majority of the sites appear to be relatively late in time, and probably represent Plains Miwok. As mentioned above, the sites appear to be satellite encampments or small villages. The activities practiced are varied, but detailed studies on the faunal collection suggest seasonality of occupation and a focus on fish species other than the main channel varieties.

Writing the definitive summary of California archeology, Moratto (1984: 529-547) devoted an entire chapter to linguistic prehistory. For the Central Valley region, Moratto points out that some Early Horizon and Middle Horizon central California archeological sites appear at least in part, contemporaneous, based on existing radiocarbon dates. Cultural materials recovered from CA-SJO-68, an Early Horizon site, are thought to date to  $4350 \pm 250$  B.P or 2350 B.C. On the other hand, a Middle Horizon component at CA-CCO-308 dates to  $4450 \pm 400$  B.P. or 2450 B.C. The antiquity of other Early and Middle Horizon sites demonstrate an overlap of the two horizons by a millennium or more.

One explanation proposes that the Middle Horizon represents an intrusion of ancestral Miwok speaking people into the lower Cosumnes, Mokelumne, and Sacramento River areas from the Bay Area. The Early Horizon may represent older Yokuts settlements or perhaps the speakers of a Utian language who were somehow replaced by a shift of population(s) from the bay.

### **Ethnological Background**

The Eastern Miwok represent one of the two main divisions of the Miwokan subgroup of the Utian language family (Levy 1978:398). The Plains Miwok, one of five separate cultural and linguistic groups of the Eastern Miwok, occupied the lower reaches of the Mokelumne, Cosumnes and Sacramento Rivers including the area of south Sacramento County surrounding the project area. Linguistic studies and the application of a lexicostatistic model for language divergence suggest that Plains Miwok was a distinct linguistic entity for the last 2000 years (Levy 1970). This result led researchers such as Richard Levy (1978:398) to conclude that the Plains Miwok inhabited the Sacramento Delta for a considerable period of time.

The political organization of the Plains Miwok centered on the tribelet. Tribelets were comprised of 300 to 500 individuals (Levy 1978:410). Each tribelet was thought to control a specific area of resources and usually consisted of several villages or hamlets. Each tribelet also was divided along lineages. These lineages were apparently localized to a specific geographic setting and most likely represented a village site and its associated satellite sites where the seasonal collection of resources occurred (Levy 1978:398-399). Descent was reckoned through males. Each settlement apparently contained roughly 21 individuals according to data collected by Gifford (Cook 1955:35).

The diet of the Plains Miwok emphasized the collection of floral resources such as acorns, buckeye, digger pine nuts, seeds from the native grasses and various fresh greens. Faunal resources such as tule elk, pronghorn antelope, deer, jackrabbits, cottontails, beaver, gray squirrels, wood rats, quail and waterfowl were hunted. Fishing, particularly salmon and sturgeon, contributed significantly to the Plains Miwok diet (Levy 1978:402-403). The primary method of collecting fish was by nets, but the use of bone hooks, harpoons and obsidian-tipped spears is also known ethnographically (Levy 1978:404)

Both twined and coiled basketry were manufactured by the Eastern Miwok. The uses of baskets included the collection and storage of seeds, basketry cradles and gaming (Levy 1978:406). Tule mats were also known to have been used by the Plains Miwok primarily as a floor covering. Other uses of tule included the manufacture of the tule balsa, a water craft in which native people navigated and exploited adjacent delta and major river systems.

Four main types of structures were known among the Eastern Miwok, depending on the environmental setting. In the mountains, the primary structure was a conical structure of bark slabs. At lower elevations the structures consisted of thatched structures, semi-subterranean earth-covered dwellings and two types of assembly houses used for ceremonial purposes (Levy 1978:408-409).

Bennyhoff (1977:11) characterized the Plains Miwok as intensive hunter-gatherers, with an emphasis upon gathering. The seasonal availability of floral resources defined the limits of the group's economic pursuits. Hunting and fishing subsistence pursuits apparently accommodated the given distribution of resources. The Plains Miwok territory covered six seasonally productive biotic communities and as such native people could apparently afford to pick and chose the resources they ranked highest from each of these zones. The subsequent storage of floral resources (such as acorns in granaries) allowed for a more stable use of the resource base (Bennyhoff 1977:10). The acorn was apparently the subsistence base needed to provide an unusually productive environment as earlier non-acorn using peoples who resided in the same geographic setting apparently suffered some seasonal deprivation (Schulz 1981). Such an emphasis upon the gathering of acorns is consistent with the population increase evident during the Upper Emergent Period in California (Doran 1980).

The study of piscine (fish) remains from both CA-SAC-65 (Schulz, Abels and Ritter 1979) and CA-SAC-145 (Schulz n.d.; Schulz and Simons 1973) indicates that small villages away from the

major rivers appear to concentrate on the collection of piscine species (particularly the Sacramento perch) that inhabited slow-moving waters.

## **Historical Background**

### **Elk Grove**

The lands of the project area lay north of any of the land grants awarded by the Mexican government in the 1840s. The name of Elk Grove was originally applied to a spot about a mile away from the eventual location of the town. James Hall built a hotel there in 1850 and named it after his hometown in Missouri. This hotel burned down in 1857. The eventual site of Elk Grove was on the ranch of Major James Buckner, who also built a hotel on the site in 1850. The hotel was owned successively by Buckner, Phineas Woodward, Mrs. Jared Erwin, and Nicholas Christophel (Davis 1890:243).

The site of Elk Grove did not really become a town until after the railroad was constructed. A farmer named Everson saw potential commercial opportunities for a town at this location, but none of the residents, including Everson, had the money available to construct the necessary buildings. Everson persuaded the citizens to pool their money to form the Elk Grove Building Company in 1876. The profits from the first building, the Chittenden and Everson general merchandise store, fueled further construction which, in turn, brought in merchants from outside the area. Only four years later, the town boasted the original general store and one other, two hotels, a flouring mill, the railroad depot, a hardware store, a meat market, a furniture factory, two drug stores, a harness shop, a grain and hay warehouse, a dressmaking shop, two millinery shops, a boot shop, a wagon factory and a blacksmith (Thompson and West 1880:234). The town continued to grow, first as a commercial center for the farmers in the area and recently as a suburban residential zone for greater Sacramento.

### **Site-Specific History**

In 1851 Dr. Jonathan Wood Pugh selected a plot of land in the Elk Grove vicinity that he considered suitable for farming and obtained options on it in favor of his sister Euphemia. Euphemia Pugh Foulks was a widow with five children living at the time in Mansfield, Ohio. Her eldest son had accompanied Dr. Pugh to California and stayed with friends of Dr. Pugh while the latter went back to Ohio to move Mrs. Foulks and his own family to the west. Euphemia took up residence on the 320 acre property in 1852, living in a covered wagon until a house was built in 1854 (Elk Grove Historical Society website).

The 1855 plat prepared by the General Land Office of the township show "Widow Foulks House" in the southwest quarter of section 34. This map shows a developed field to the north of the house on the section line.

In 1859, Mrs. Foulks' land was valued at \$450, with improvements of \$575. She had personal property totalling \$362 (Sacramento County Tax Assessment Roll 1859). In 1870, the land value had increased to \$800. She had two wagons, 16 head of cattle, 6 horses and furniture, for a total personal property value of \$670 (Sacramento County Tax Assessment Roll 1870). The land value jumped to \$3,200 by 1875. Ten years later, the land had increased in value to \$8,960, with \$1,400 in improvements, \$800 in houses and fences, and \$600 in trees and vines. Her personal property included a watch, furniture, farm tools, machinery, 3 wagons, harness, a hog, 4 horses, 3 colts, a cow, 3 calves, 3 head of cattle, and poultry (Sacramento County Tax Assessment Roll 1875, 1885).

George Foulks, born in 1842 and the eldest son of Euphemia, lived on the ranch long enough to graduate from Elk Grove Union High School. He spent several years away from the ranch as a young man, particularly in the railroad and lumber industries around Verdi, Nevada, but returned to run the ranch for his mother in 1881 (Irvine 1905:1106; Elk Grove Historical Society website).

Euphemia Foulks had brought grape cuttings with her from Ohio and cultivated them on a small portion of the ranch. George soon expanded the area of the vineyard to about 70 acres, becoming a pioneer in Central Valley viticulture.

When George was to be married in 1886, he built a large Italianate Victorian house near the old house occupied by Euphemia. He and his wife Nellie had two children, who were raised in this house. The construction of the main house is reflected in the 1890 tax assessment. Land had increased in value to \$9,800, with the improvements totalling \$2,500 (Sacramento County Tax Assessment Roll 1890). Mrs. Foulks died in February, 1891. Her will indicated that she was the owner of the half of the property (160 acres) with no dwellings. She left small bequests to her daughters and son John P. Foulks of Verdi, Nevada. The remainder of the estate, the 160 acres valued at \$6,000, was left to son George (Sacramento County Probate Case #1378).

One of the daughters, Josephine, married Abraham C. Freeman in 1867. Freeman was a prominent jurist in California, and lived in San Francisco, with additional residences in Auburn and Soda Springs. Both her biography and portrait and those of her husband appear in the 1924 Placer County history (Lardner and Brock 1924).

George Foulks continued to operate the ranch. He purchased an 80 acre tract of land in Placer County in section 16, Township 15 North Range 15 East, an extremely remote tract of land near the Middle Fork of the American River. George Foulks died in December 1927, leaving stock to her daughter and the land and ranch complex to his son, Guy G. Foulks (Sacramento County Probate Case #12,792)

Guy Foulks, the only son of George Foulks, was born on the ranch in 1877 and lived there for the bulk of his life, dying there in 1973. In addition to running the ranch, he purchased an Oldsmobile dealership in Sacramento and ran it as Foulks Motor Company for thirty-nine years. At some point, Guy moved the old Elk Grove school house where he had been educated onto the

property to be a dance hall and clubhouse associated with the large concrete swimming pool he built there.

In 1966, the major portion of the 320 acres was purchased by a group of Elk Grove investors headed by Dominic Maita from Guy G. Foulks and his son George W. The purchase price at the time was reported to be \$600,000. One provision of the agreement set off the five acres including the house for the seller's use (*Sacramento Bee* March 10, 1966). Guy Foulks died on the family ranch in November 1973 at the age of 85 (*Sacramento Bee* November 18, 1973).

His son, George W. Foulks, purchased a home in East Sacramento in about 1953, living there until his death. His widow, Beatrice Foulks, passed away at their East Sacramento home on January 1, 2005 (*Sacramento Bee* January 4, 2005).

For several years after the death of Guy Foulks, the Foulks Ranch was rented to others, but eventually Linda (Foulks) Campbell and her husband Brady moved onto the 1886 house, leasing out the original house (Elk Grove Historical Society website).

## **RESEARCH**

### **Records Search Results**

A records search was conducted through the North Central Information Center of the California Historical Resources Information Center on March 17, 2004 (Appendix 2). The property had never been surveyed, and there are no sites recorded near the property.

Additionally, the California Points of Historical Interest (1992 and updates), the California Inventory of Historic Places (1976), and California Historical Landmarks (1996) were checked for information on significant historical sites.

### **Archival Research**

Archival research was conducted by Melinda Peak at the Sacramento Archives and Museums Collection Center, as well as at the California Room of the California State Library. Sources utilized include County histories, biographical cards, probate records, tax assessment map books, tax assessment rolls, newspapers, and historic County maps.

### **Consultation**

Peak & Associates contacted the Elk Grove Historical Society requesting information on the property. We were referred to the Historical Society's web site that provided historical data

utilized in the context statement. On August 20, 2004, Tom Russell of the Historical Society also sent a statement to our office with information on the Foulks family. The communication also detailed the concerns of the organization regarding the proposed project. This communication is attached as Appendix 3.

The Historical Society believes that the site is important and "would be eligible to be placed on the National and State Register of Historic Places." The Historical Society communication discusses their desire to have the oldest house on the property moved to the Elk Grove Hotel and Stage Stop Museum property. The organization has contacted the Community Services District about this, receiving conceptual approval. The Historical Society is also aware of a plan for the relocation of the 1886 house to another property in the vicinity for restoration. Although they are aware of the plans to move buildings the communication states, "the best of all scenarios would be to leave the buildings in place and restore them as a historical site for the benefit of the City, the community and citizens of Elk Grove."

## **FIELD SURVEY**

On August 16, 2004, Robert A. Gerry of Peak & Associates, Inc., surveyed the property to identify any unrecorded resources and to collect data toward preparing a site record for the ranching and residential complex (Appendix 4). The form will be filed at the North Central Information Center of the California Historical Resources Information System.

The field inspection employed linear transects spaced at no more than 10 meter intervals. No artifacts or other evidence of prehistoric period occupation or use were found during the survey.

In all, the building complex includes eleven permanent buildings and structures and three trailers. Of the eleven buildings and structures with foundations, six are sheds or garages, one is a swimming pool, one is a cistern and three are residences. The buildings mentioned in the historic background section above are all still present: the original residence on the property, the Italianate Victorian built for George Foulks and the building that once was an Elk Grove school house. Each of the structures is discussed below in the order they were recorded.

### **Foulks 1**

This is the 1886 Italianate residence that is the showpiece of the property. It is a combination of three masses: a central two story segment with a hipped roof, a slightly narrower two story segment with hipped roof centered on the front (south elevation) of the house and a one story section, also with hipped roof, extending north. There are decorative brackets in the eaves, a standard part of Italianate design, and the windows are tall and narrow, another typical element.

The side windows are one-over-one sashes but the fronts are one-over-two. There are aluminum-framed windows on the northern extension and, on the west elevation of the extension, a very

modern large fixed window that extends out from the plane of the wall. There is a large wooden deck on the full length of the east side and a framework for an arbor on the west, in front of a side entrance. These are probably not original elements, nor is the large brick chimney on the west side. The south (front) elevation features a two story bay on the west and a covered entry on the right. An attractive design touch is provided by false columns at each corner of the structure. These are plain corner boards with embellishments at base and cornice that give the appearance of classical columns.

### **Foulks 2**

This is an old nondescript wood frame shed located just north and west of Foulks 1. It is almost buried in vegetation and is in very poor repair.

### **Foulks 3**

Immediately to the north of Foulks 2 is a long narrow structure of various materials. It appears to have been added to as needed over the years, to the point that it is difficult to say which portion is the original structure. It shows a wide variety in quality of construction as well. The bulk of the structure is a shed roofed storage structure that includes corrugated metal, plastic sheeting a large section of clear plastic "window" among the various materials. Opposed to this is a small concrete pump house with pyramidal roof that is very tidily built. Also present is a large bay, probably a barn originally, that is now an open shelter for salvaged building materials and a small frame shed with gabled roof that has been converted, by the addition of a metal roll-up door, into a garage. The different sections of the structure were clearly built at different times for different purposes, but they all share one or more walls today.

### **Foulks 4**

This is the concrete swimming pool. It measures 44 by 22 feet with a concrete apron all around. There is a shed for pumps and equipment on the east side. There is a deep and shallow section of the pool and it is fenced off from the rest of the property by both metal and wood fencing.

### **Foulks 5**

Adjoining Foulks 4 on the north is the former Elk Grove schoolhouse that served as a clubhouse and dance house associated with the pool. The county building record gives a construction date of 1870 for the building, but it has been extensively modified from its schoolhouse days. The original structure, as far as can be determined now, was a simple rectangular frame house with gabled roof and lapped siding. The side facing the pool now features board-and-batten siding, aluminum framed windows and aluminum awnings over the windows. There are also shed roofed extensions on the north and east sides that are clearly later additions. The original house does not appear to have been in any particular style. It features closed and very narrow eaves and no decoration at all.

### **Foulks 6**

This feature is a garage located north of the main house and east of Foulks 3. It is a simple frame structure with gabled roof. It is not apparent what the original age of the structure might be, but it has a new roof and three aluminum swing-up doors.

### **Foulks 7**

The feature is a very long, narrow shed that appears to be a combination of several structures of different construction dates, similar to Foulks 3. Beginning on the south, it includes a tile roofed section with board-and-batten siding, a corrugated tin roofed section with an eight-pane fixed window, a metal roofed and sided section with a roof extension forming an awning over a wide opening on the east side, another metal roof and metal siding section with wide openings and no doors and, at the north end, another small board-and-batten section with a metal roof.

### **Foulks 8**

This house includes the original 1854 residence. There have been numerous modifications and additions over the years. Historic photographs posted on the Elk Grove Historical Society's web site indicate that the original residence was a rectangular two-story frame side gabled structure with a small flat roof over the entry and a short section on the north covered by an extension of the main roof at a shallower pitch. There is another photograph that shows the above plus an additional shed roofed extension to the back (north) of the building. This extension is in a similar style as the earlier part of the structure, but poorly built in comparison. Later, a full width front porch was added, again covered by a shed roof and supported by four plain wood columns. These now have been replaced by two cylindrical wood columns placed near, but not quite at, the corners of the roof. All the windows are replacements, there is a large stovepipe sticking out of the western wall and a window mounted air conditioner on the same wall. There are additions on the north, a low shed, and on the east, a one story gabled segment. The latter is clumsily done with one wall abutting a window frame on the original house, to the point that the frame has now been displaced by settling. The roof of the extension is notched to clear the roof of the original and there is a line of shingles nailed between the roof of the extension and the east wall of the original. The shingles appear to have been installed to provide a watertight seal between the two sections.

### **Foulks 9**

This is a wood frame, two car garage with top-hung sliding wood doors and a flat roof. It appears to be the type of garage that was built when garages (as opposed to converted barns and sheds) were becoming common in the 1920s or so.

### **Foulks 10**

This is a typical long, narrow shed for storing farm equipment. It has four bays, three of them

open to the north, the direction that is away from the other structures and was toward the fields. The fourth bay has a double door formed of two pieces of corrugated metal. The roof and the other three sides are all covered in the same metal. The roof is technically a shed roof, but it slopes at a very shallow angle and is almost flat.

### **Foulks 11**

This concrete cistern is located just north of Foulks 10. It is circular with a low curbing about ten feet in diameter around a tank five feet high and eight feet in diameter.

## **EVALUATION OF SIGNIFICANCE**

### **California Register of Historical Resources**

For the purposes of CEQA, an historical resource is a resource listed in, or determined eligible for listing in the California Register of Historical Resources. When a project will impact a site, it needs to be determined whether the site is an historical resource, which is defined as any site which:

- (A.) Is historically or archeologically significant, or is significant in the architectural, engineering, scientific, economic, agricultural, educational, social, political or cultural annals of California; and
- (B) Meets any of the following criteria:
  - 1. Is associated with events that have made a significant contribution to the broad patterns of California's history and cultural heritage;
  - 2. Is associated with the lives of persons important in our past;
  - 3. Embodies the distinctive characteristics of a type, period, region, or method of construction, or represents the work of an important creative individual, or possesses high artistic values; or
  - 4. Has yielded, or may be likely to yield, information important in prehistory or history.

All resources nominated for listing must have integrity, which is the authenticity of a historical resource's physical identity evidenced by the survival of characteristics that existed during the resource's period of significance. Resources, therefore, must retain enough of their historic character or appearance to be recognizable as historical resources and to convey the reasons for their significance. Integrity is evaluated with regard to the retention of location, design, setting,

materials, workmanship, feeling and association. It must also be judged with reference to the particular criteria under which a resource is proposed for nomination. (State Office of Historic Preservation 1999).

Under the first criterion, the building complex is associated with the use of the overall 320 acres of the land parcel for agricultural purposes. The land was sold for development in March of 1966. For the past 38 years, the land has been used for residential purposes. The land surrounding the complex on all sides has been developed, and the association with agriculture is no longer evident.

Criterion 2 requires an association with an important individual. The main house was built by George Foulks. Foulks was a landowner of a parcel of average size in the area, and is not a person of particular importance in the region. The older home was associated with Euphemia Foulks, again, not a particularly important individual in local history.

According to the Office of Historic Preservation, familial significance is not what the criteria addresses: the building must be associated with an individual from the family who is demonstrably significant, not that a family had more than one prominent member over the years (Marilyn Lortie, personal communication, 2004). *National Register Bulletin 32* further addresses this, and presents a similar example of a building complex associated with a long-term family in a region. The overall prosperity and community involvement of the successive landowners did not distinguish any one individual family member as an individual important in our past. This seems to represent a similar case--a family who were successful in both farming and other ventures, and whose name became locally prominent, particularly related to their automotive sales business in Sacramento.

Criterion 3 is more problematical. Taken as a whole, the complex is a mix of buildings from a number of dates of construction. It exhibits no continuity of design, and does not appear to be eligible as a complex.

Viewing the buildings individually, three may merit consideration on their own: Foulks 1, Foulks 5 and Foulks 8.

Foulks 1 is the main residence. It is an Italianate style, and on the front elevation is fairly representative of rural Italianate house in the region. The major alteration on the front (south) side is the addition of a deck that wraps to the east side of the house. On the west side, a modern chimney has been added that is not compatible with the house style. In addition, there is a large addition on the north side of the residence. The significance of the building must also be evaluated with regard to integrity. The building has retained integrity of location only. The building's setting has been altered, particularly by the construction of the tall fence to the west of the site for the tennis complex. The design of the building has been altered through the addition of the deck, chimney and building additions. The integrity of the workmanship, feeling and association has also been altered through the many changes to the building.

Foulks 5 is the 1870 Elk Grove schoolhouse. The building was brought to the property in the 1920s, and was extensively remodeled for use as a pool house. It no longer in any way reflects its original appearance as a schoolhouse.

Foulks 8 is the 1854 residence that Mrs. Foulks had built on the property. The building has been extensively remodeled over the years, and in no way retains its original design or appearance. The building does not represent any particular style.

John Nadolski, archeologist with Pacific Municipal Consultants, believes that the community of Elk Grove maintains a different set of standards for significance than the State standards, and believes that all three buildings meet the local community's standards for significance for their association with the Foulks family, under Criteria 1 and 2.

## **RECOMMENDATIONS**

### **General**

Although no prehistoric sites were found during the survey of the project area, there is a possibility that a site may exist and be obscured by vegetation, fill, or other historic activities, leaving no surface evidence. It is also possible that a remnant pit or deposit related to the historic occupancy of the land. If artifacts or unusual amounts of stone, bone, or shell are uncovered during construction activities, an archeologist should be consulted for on-the-spot evaluation. If the bone appears to be human, the Sacramento County Coroner must be contacted. If the coroner determines that the remains are likely to be of Native American origin, he will contact the Native American Heritage Commission in Sacramento to determine the most likely descendants.

Historic period artifacts may also be present within the site, although previous experience with similar sites has never yielded more than a few isolated artifacts, none of which could be used to address important research questions. If historic period artifacts are found during demolition or building relocation activities, an archeologist should be consulted for an on-site evaluation.

### **Building Complex**

According to John Nadolski, archeologist for Pacific Municipal Consultants, three of the buildings in the complex are eligible for the California Register for their local significance: Foulks 1, 5 and 8.

Prior to any alterations occurring to the site, it is recommended that a permanent record be made of the overall complex and the significant buildings in their setting through the photographic documentation of the site by a professional who has taken photographs for the Historic American Buildings Survey (HABS). The photographs should be filed with the Elk Grove Historical Society

if they can provide proper archival care and access to the public to the photographs. If not, the photographs should be placed at an appropriate archival facility such as the Sacramento Archives and Museums Collections Center, the Sacramento Room of the Sacramento City Library or a special collections room of a local public library, if one exists in a branch library in the City of Elk Grove.

The project developer has agreed to allow the removal and relocation of the buildings of concern: Foulks 1, 5 and 8. The physical feasibility of relocating the buildings first needs to be assessed by a professional, experienced in the moving of older buildings. If the buildings can be safely moved, then they should be relocated to sites in Elk Grove or in the near vicinity.

The pool house building (Foulks 8) has deteriorated over the years, and it may not be possible to relocate the building due to the condition. Similarly, Foulks 5 has been altered greatly over the years and may lack the structural stability necessary for it to be moved. If a professional determines that the buildings are not physically capable of being moved, or are not moved within a reasonable time frame, the developer would then be allowed to offer the buildings for salvage, followed by the potential demolition of all remaining buildings on the site.

Due to the small size of the parcel, the preservation of any of the buildings on the site is not feasible. We believe that the photographic documentation of the buildings, combined with the relocation of the important buildings in the complex to other sites in the region will allow a continued appreciation of early buildings and the history of the former farm land that once provided the support for the community of Elk Grove.

## BIBLIOGRAPHY

Bennyhoff, James A.

- 1977 Ethnogeography of the Plains Miwok. University of California, Davis Publications 5. Davis.

Boland, Beth Grosvenor

- n.d. Guidelines for Evaluating and Documenting Properties Associated with Significant Persons. *National Register Bulletin* 32.

California Department of Parks and Recreation

- 1976 California Inventory of Historical Resources. California State Department of Parks and Recreation, Sacramento.
- 1990 California Historic Landmarks. California State Department of Parks and Recreation, Sacramento.

Cook, Sherburne F.

- 1955 The Epidemic of 1830-33 in California and Oregon. University of California Publications in American Archaeology and Ethnology 43(3):303-326. Berkeley.

Davis, Winfield

- 1890 An Illustrated History of Sacramento County, California. The Lewis Publishing Company, Chicago.

Doran, G.

- 1980 Paleodemography of the Plains Miwok Ethnolinguistic Area, Central California. Unpublished Ph.D. dissertation, Department of Anthropology, University of California, Davis.

Holmes, W.H.

- 1902 Anthropological Studies in California. Smithsonian Institution, Report of the U.S. National Museum for 1900, pp.155-187. Washington, D.C.

Hoffman, Ogden

- 1862 Reports of Land Cases Determined in the U.S. District Court for the Northern District of California. Volume 1. Numa Hubert, Publisher, San Francisco.

Howard, Hugh (for Home Renovation Associates)

- 1989 How Old is this House? The Noonday Press, New York.

- Irvine, Leigh H.  
1905 A History of The New California, Its Resources and People. The Lewis Publishing Company, Chicago.
- Lardner, W. B. and M.J. Brock  
1924 History of Placer and Nevada Counties, California. Historic Record Company, Los Angeles.
- Levy, Richard S.  
1970 Miwok-Costanoan Lexicostatistics. Ms. in author's possession.  
1978 Eastern Miwok. In California, edited by Robert F. Heizer, pp. 398-413. Handbook of North American Indians, vol. 8, William G. Sturtevant, general editor. Smithsonian Institution, Washington, D.C.
- Lillard, Jeremiah B., Robert F. Heizer and Franklin Fenenga  
1939 An Introduction to the Archaeology of Central California. Sacramento Junior College, Department of Anthropology Bulletin 2. Sacramento.
- Lillard, Jeremiah B. and William K. Purves  
1936 The Archeology of the Deer Creek-Cosumnes Area, Sacramento County, California. Sacramento Junior College, Department of Anthropology Bulletin 1. Sacramento.
- McAlester, Virginia and Lee McAlester  
1990 A Field Guide to American Houses. Alfred A. Knopf, New York.
- Meredith, H.C.  
1899 Aboriginal Art in Obsidian. Land of Sunshine 11:255-258.  
1900 Archaeology in California: Central and Northern California. In Prehistoric Implements, edited by W.K. Moorehead, pp. 258-294. Robert Clarke, Cincinnati.
- Moratto, Michael J.  
1984 California Archaeology. Academic Press, New York.
- Peak & Associates, Inc.  
1999a Cultural Resources Assessment of the East Franklin Specific Plan Area. Ms. on file, North Central Information Center.  
1999b Cultural Resource Assessment for the Elk Grove Corners General Plan Amendment and Rezone. Ms. on file, North Central Information Center.

- Ragir, Sonia  
 1972 The Early Horizon in Central California Prehistory. University of California Research Contributions 15. Berkeley.
- Reed, Walter G.  
 1923 History of Sacramento County, California. Historic Record Co., Los Angeles.
- Robinson, W. W.  
 1979 Land in California. Paperback Edition. University of California Press, Berkeley.
- Root Cellar (Sacramento Genealogical Society)  
 1991 Sacramento County, California Census: 1870 and 1880. Privately printed, Citrus Heights, CA.
- Schenck, W. Egbert and Elmer Dawson  
 1929 Archeology of the Northern San Joaquin Valley. University of California Publications in American Archeology and Ethnology 25(4):289-413. Berkeley.
- Schulz, Peter D.  
 n.d. Archaeological Investigations at the Stone Lake Site (CA-Sac-145), Sacramento County, California. Ms. on file, California Department of Parks and Recreation, Sacramento.  
 1981 Osteoarchaeology and Subsistence Change in Prehistoric Central California. Unpublished Ph.D. dissertation, Department of Anthropology, University of California, Davis.
- Schulz, Peter, D. Abels and Eric Ritter  
 1979 Archeology of the Johnson Site (CA-Sac-65), Sacramento County, California. California Department of Parks and Recreation, Archaeological Reports 18:1-31.
- Schulz, Peter and Dwight Simons  
 1973 Fish Species Diversity in a Prehistoric Central California Indian Midden. California State Department of Fish and Game 59(2):107-113. Sacramento.
- Soule, William E.  
 1976 Archeological Excavations at CA-Sac-329 near Walnut Grove, Sacramento County, California. Ms. on file, North Central Information Center, California State University, Sacramento .
- State Office of Historic Preservation  
 1999 *California Register of Historical Resources: The Listing Process*. Technical Assistance Series #5. The Resources Agency, Sacramento.

Thompson & West

1880 History of Sacramento County, California. Thompson & West, publishers, Oakland. Reprinted by Howell-North, Berkeley, 1960.

Warner, Laurie

1993 Cultural Resource Section, Revised Draft Environmental Impact Report for the Proposed Incorporation of Elk Grove, California. Ms. on file, North Central Information Center.

**APPENDIX 1**

**Resumes of Investigators**

**PEAK & ASSOCIATES, INC.**  
**RESUME**

**MELINDA A. PEAK**

**January 2005**

**Senior Historian/Archeologist**

3941 Park Drive, Suite 20 #329

El Dorado Hills, CA 95762

(916) 939-2405

**PROFESSIONAL EXPERIENCE**

Ms. Peak has served as the principal investigator on a wide range of prehistoric and historic excavations throughout California. She has directed laboratory analyses of archeological materials, including the historic period. She has also conducted a wide variety of cultural resource assessments in California, including documentary research, field survey and report preparation.

In addition, Ms. Peak has developed a second field of expertise in applied history, specializing in site specific research. She is a registered professional historian and has completed a number of historical research projects. Ms. Peak has been a regular lecturer for courses in the Capital Campus Public History program (California State University, Sacramento), teaching cultural resource law and site specific research methods.

Through her education and experience, Ms. Peak meets the Secretary of Interior Standards for historian, architectural historian, prehistoric archeologist and historic archeologist.

**EDUCATION**

M.A. - History - California State University, Sacramento, 1989

Thesis: *The Bellevue Mine: A Historical Resources Management Site Study in Plumas and Sierra Counties, California*

B.A. - Anthropology - University of California, Berkeley, 1976

**RECENT PROJECTS**

In recent months, Ms. Peak has completed several determination of eligibility and effect documents in coordination with the Corps of Engineers for projects requiring federal permits, assessing the eligibility of a number of sites for the National Register of Historic Places. She has also completed historical research projects on a wide variety of topics for a number of projects including the development of navigation and landings on the Napa River, a farmhouse dating to

the 1860s, an early roadhouse, and a section of an electric railway line. She also completed an NRHP evaluation of Folsom Dam for the Corps of Engineers.

In recent years, Ms. Peak has prepared a number of cultural resource overviews and predictive models for blocks of land proposed for future development for general and specific plans. She has been able to direct a number of surveys of these areas, allowing the model to be tested.

She served as principal investigator for the multi-phase Twelve Bridges Golf Club project in Placer County. She served as liaison with the various agencies, helped prepare the historic properties treatment plan, managed the various phases of test and data recovery excavations, and completed the final report on the analysis of the test phase excavations of a number of prehistoric sites. She is currently involved as the principal investigator for the Clover Valley Lakes project adjacent to Twelve Bridges in the City of Rocklin, coordinating contacts with Native Americans, the Corps of Engineers and the Office of Historic Preservation.

Ms. Peak has served as project manager for a number of major survey and excavation projects in recent years, including the many surveys and site definition excavations for the 172-mile-long Pacific Pipeline proposed for construction in Santa Barbara, Ventura and Los Angeles counties. She also completed an archival study in the City of Los Angeles for the project. She also served as principal investigator for the 1997 coaxial cable removal project for AT&T.

Additionally, she completed a number of small surveys, served as a construction monitor at several urban sites, and directed the excavations of several historic complexes in Sacramento, Placer and El Dorado Counties.

Ms. Peak is the author of a chapter and two sections of the recently published history (1999) of Sacramento County, *Sacramento: Gold Rush Legacy, Metropolitan Legacy*. She is currently preparing text for the second Sacramento County history volume, to be published by Heritage Media in 2005.

**PEAK & ASSOCIATES, INC.**  
**RESUME**

**ROBERT A. GERRY**

**January 2005**

**Senior Archeologist**

3941 Park Drive, Suite 20-329

El Dorado Hills, CA 95762

**PROFESSIONAL EXPERIENCE**

Mr. Gerry has over twenty-nine years of extensive experience in both the public and private sectors. He has directed all types of cultural resource-related projects, including field survey, test excavations, data recovery programs, intensive archival research and cultural resource management. He has completed archeological work in most cultural areas of California and in the western Great Basin.

**EDUCATION**

Graduate studies - Anthropology - California State University, Sacramento, 1972-1977

B.A. - Anthropology - University of Illinois, Chicago Circle, 1972

**RECENT PROJECTS**

Mr. Gerry was field director for a cultural resources survey of about 18,640 acres within the Naval Petroleum Reserve No. 1, Kern County, California. The project employed a stratified random sampling strategy and resulted in the recording of 112 cultural resources, and preparation of a management plan. He also directed a subsequent excavation program for evaluation of significance. Additionally, he served as field director for archeological surveys on the Plumas, Stanislaus, El Dorado and Six Rivers National Forests.

He was field director and primary report writer on several linear surveys of considerable length -- including the San Joaquin Valley Pipeline (157 miles) for Shell Oil, the Point Arena-Dunnigan fiber optic cable (137 miles) and the Medford, Oregon, to Redding, California fiber optic cable (151 miles), the Oregon and Idaho portions of the Spokane to Boise fiber optic cable, and the San Bernardino to San Diego fiber optic cable, for American Telephone & Telegraph Company. He also assisted on the 170 mile Pacific Pipeline survey on the southern coast of California.

He produced the computer program that stored, sorted and printed out data abstracts for 1604 sites involved in the Enlarged Shasta Dam and Alternatives Class I Cultural Resources Overview

for the Bureau of Reclamation. He directed the transit-and-stadia mapping of a prehistoric/historic site complex covering some 170 acres in El Dorado County and drafted the final map.

Mr. Gerry has developed a specialty in bridge replacement evaluations, completing five such studies in Tuolumne County, two in Santa Barbara County, two in Amador County and eight others in various areas of California.

Mr. Gerry has had extensive experience in the recordation of mining sites in northern California and Nevada for proposed mining undertakings as well as in the course of survey for proposed subdivisions, reservoirs, and other development projects. He directed the survey of two parcels totalling 2,240 acres in the Battle Mountain Mining District in Lander County, recording a number of mining sites and features. Within the Cook Ranch Project area in El Dorado County, he completed the recordation of several gold mines and a cinnabar mine.

Mr. Gerry has directed test excavations for evaluation of significance at a number of sites, both historic and prehistoric. Recent examples include CA-NAP-261, twelve sites on Naval Petroleum Reserve No. 1 and three sites on Russell Ranch in Sacramento County.

His work has included an important role in working with Native American peoples. He has surveyed eight allotments and rancherias in the Pit River area, the Point Arena/Manchester Rancheria in Mendocino County, the Susanville Rancheria in Lassen County, the Rumsey Rancheria in Yolo County, and three rancherias in northwestern California. In each of these projects, he has been closely involved with Native American organizations and individuals, including a number of native people he has directed as surveyor trainees.

# NORTH CENTRAL INFORMATION CENTER

CSU-SACRAMENTO - 6000 J STREET, ADAMS BLDG., #103, SACRAMENTO, CA 95819-6100  
916-278-6217 FAX 916-278-5162

---

## Summary of Results for Records Search

March 17, 2004

NCIC File No.: SAC-04-39

To: Robert Gerry  
Consulting Archaeologist  
Peak & Associates, Inc.  
3941 Park Drive, Suite 20, #329  
El Dorado Hills, CA 95762

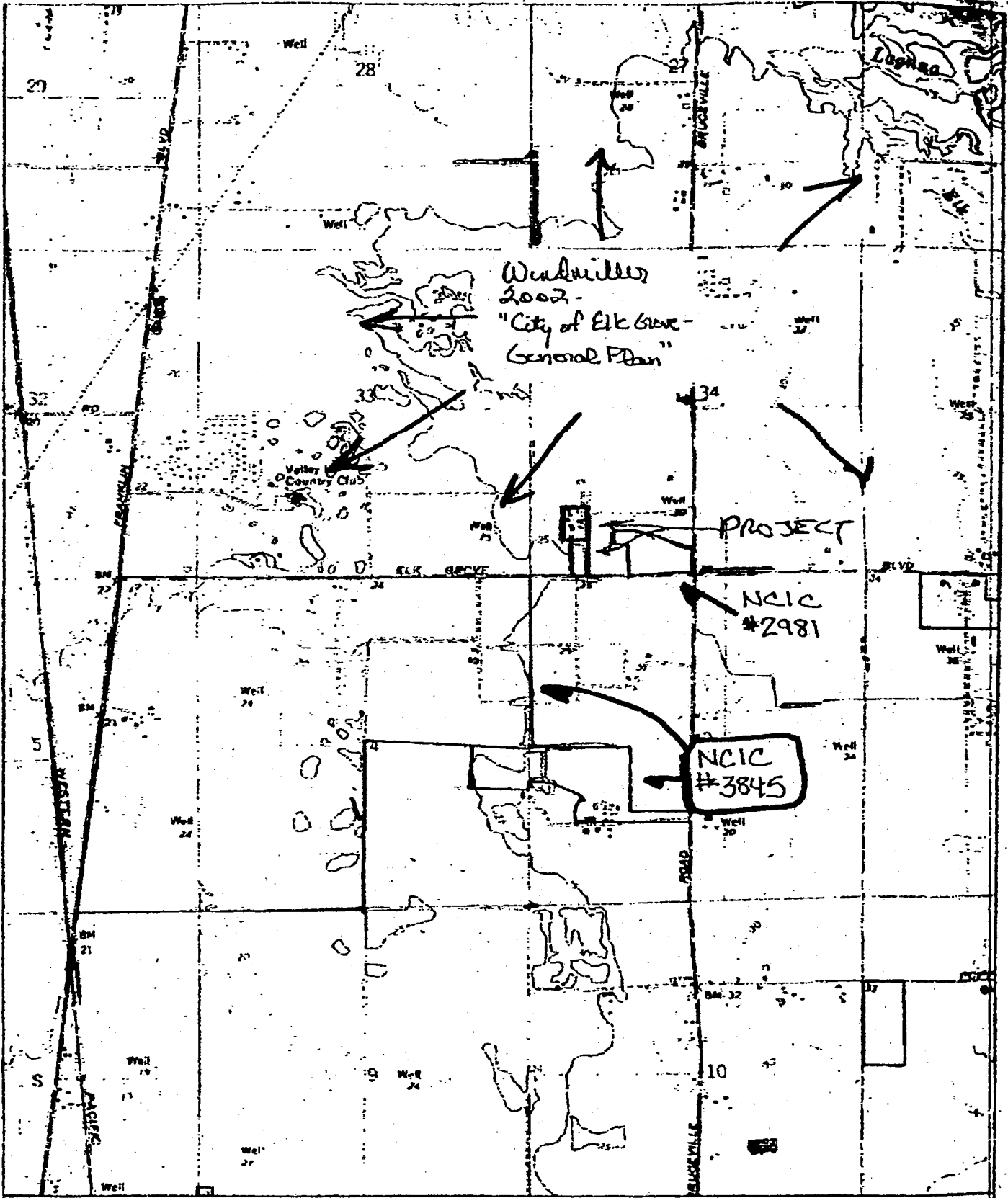
From: David McCullough, Jr., Researcher

Project: **Foulks Ranch: T7N/R5E Section 34;  
Florin Quad; Sacramento County**

- **Sites Within or Adjacent to Project Area:** None
- **Studies Within or Adjacent To Project Area:** NCIC # 2981, #3845, Windmiller 2002 & Peak 1993 (Title pages and project area maps enclosed).
- **OHP Historic Property Directory (HPD):** Nothing Found
- **California Inventory of Historic Resources (1976):** Nothing Found
- **California Dept. of Transportation Bridge Inventory:** Nothing Found.
- **California State Historical Landmarks (1996):** Nothing Found
- **California Place Names (Gudde 1969):** Nothing Found
- **Historic Spots in California (Hoover et al. 1990):** Nothing Found
- **GLO Plat Map:1855 (T7N/R5E)** Shows the Widow Foulks' Housea. (Copy of plat enclosed).

As indicated on the attached agreement form, the charge for this record search is **\$122.85.** Payment instructions are included at the bottom of the form. Please sign where indicated and return the **YELLOW** copy with your payment.

Thank you for using our services. If you have any questions please do not hesitate to call 916/278-6217.



Name: FLORIN  
 Date: 10/6/2003  
 Scale: 1 inch equals 2000 feet

Location: 10 637288 E 4252017 N  
 Caption: Campbell Property  
 7.7 acres  
 T7N. R5E, Sect 34

**APPENDIX 2**

**Record Search Results**

**peakinc**

---

**From:** Elk Grove Historical Society [eghistorical@comcast.net]  
**Sent:** Friday, August 20, 2004 1:47 PM  
**To:** peakinc@sbcglobal.net  
**Cc:** Dennis Buscher  
**Subject:** Foulks Ranch history

Malinda Peak

Attached is some history which you had requested of the Foulks Ranch. This history has been assembled from several documents, letters and interviews. You had requested information on the "Foulkes" and the proper spelling is "Foulks"

Pictures are available by going to the following website address:

<http://eghistorical.home.comcast.net/foulks1.htm>

These pictures are on our website but not available through the main menu of the web site.

There is also a brief history of the Foulks Ranch on our website:

<http://eghistorical.home.comcast.net>

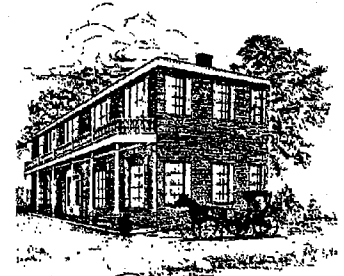
If we can be of further assistance, feel free to contact us.

**Tom Russell**  
Elk Grove Historical Society  
[eghistorical@comcast.net](mailto:eghistorical@comcast.net)

**APPENDIX 3**

**Elk Grove Historical Society**

Elk Grove Historical Society  
P.O. Box 562  
Elk Grove, CA 95759



ELK GROVE HOTEL & STAGE STOP  
1850

To: Peak & Associates  
From: Tom Russell: Elk Grove Historical Society  
Subject: Foulks Ranch buildings

August 20, 2004

The Elk Grove Historical Society would like to bring to your attention the significant historical importance the Foulks Ranch is to the City and community of Elk Grove. It is our hope that you share this information with the Planning Commission and the City Council to aid them in making their decisions regarding the disposition of Foulks Ranch.

The Foulks Ranch property contains three historical buildings; a small 1854 Salt Box (pioneer) styled house, an 1886 two story Italianate Victorian, the modified original Elk Grove Grammar School built around 1870, and the first swimming pool in the Elk Grove area.

In anticipation that the City of Elk Grove will approve the development plans of the Foulks Ranch property, the Historical Society contacted CSD for permission to have the 1853 house moved to the Elk Grove Hotel and Stage Stop Museum property. CSD has conceptually agreed to allow this. There is an interested party who wishes to move the 1886 house to their property and restore it. Of course the best of all scenarios would be to leave the buildings in place and restore them as a historical site for the benefit of the City, the community and the citizens Elk Grove.

We of the Historical Society believe that the Foulks Ranch buildings represent a historically important part of the growth of Elk Grove. The Salt Box pioneer styled 1854 home represents the pioneer woman who crossed the plains with her children in a covered wagon, and the 1886 Italianate Victorian home represents the continuance and prosperity of her, Euphemia Foulks, family. The important architecture of the 1886 house is connected to designs of two very important historical buildings in the area, the Governors Mansion and the Rosebud Farm house. The Foulks Ranch contains the oldest remaining structure in Elk Grove that not only has been continuously owned by the Foulks Family since 1853, but also is still in its original location and design. The 1886 home is one of the last Victorian styled houses outside of the Old Town Elk Grove area that is still in its original location. It is our opinion that the Foulks Ranch would be eligible to be placed on the National and State Register of Historic Places.

## **A brief history of the Foulks Ranch:**

In 1852, Euphemia Pugh Foulks, a widow with five children struggling to make a living in the town of Mansfield, Ohio, made the decision to make a life for her family in California. In 1852, Euphemias' brother, Dr. Jonathan Wood Pugh and her eldest son, John Pugh Foulks came to California to see what the new frontier had to offer. Dr. Pugh led his first wagon train following the Oregon Trail across the plains and mountains where he eventually found land south of Sacramento that he deemed suitable for his family and his sister's family. Putting options on land for his sister, Dr. Pugh returned to Mansfield leaving Euphemias' son with friends in California.

Euphemia sold or gave away her belongings that she would not be able to take on the wagon train to California. Two possessions that she did bring with her were a dropped leaf table and a rocking chair. In April of 1853 they began their journey by taking a train to Cincinnati, Ohio, then a steamer down the Ohio River to the Mississippi, and up to St. Louis. Dr. Pugh arranged for rooms at a hotel for a week while he completed acquisition of the wagons, ox teams and supplies they would need for the trip. They departed on their journey West from St. Joseph, Missouri.

The wagon train included eighteen people from the Pugh and Foulks families, a hundred cattle, thirty horses, a dozen teams of oxen and a few cowboys to care for the cattle who were going west to hunt for gold. With wagons full of bags of flour, salt, hard bread tack, bacon, furniture and household goods, there was little room for riders. The children took turns riding in the wagon, but walking most of the way each day. The wagon train traveled along a trail that led to Oregon, California and the Pacific Ocean. Many wagon trains traveled this route so the ruts were deep from those who had gone before.

Traveling the Oregon Trail to the California cutoff then over the Sierra Mountains following the Donner Party route to Sacramento, Euphemia and her children arrived at the site of the Pugh Ranch (now known as the Ehrhardt Ranch) on Bruceville Road around October 1st of 1853.

Earlier in 1853, a law had been passed authorizing 500,000 acres to be sold as school land. The purchases were not to be less than 160 acres and not more than 320 acres at two dollars an acre. The Foulks Ranch was such land.

Euphemia and her brother, immediately set off to find a builder for her new home. During construction, Euphemia and her children lived in their covered wagon through the winter of 1853/54 and the house was completed in the spring of 1854. The ranch was called "Oakwood" due to a large stand of native oak trees on the property. The lumber used in the construction came around the Horn from South Carolina. The home was a Salt Box (Pioneer) styled house of approximately 19 feet wide by 27 feet deep consisting of a dining-sitting room, kitchen, and two upstairs bedrooms accessed by a steep ladder. There was just enough room to walk down the center of the bedrooms with the beds on each side under the pitch of the roof, not leaving much room to sit up in bed. Two doors entered the house, one into the sitting parlor dining room and one into the kitchen area. The original exterior siding was shiplap construction while the interior contained horn wood, a narrow tongue and grooved wood, and the floors were built with wide planks held in place with square nails.

The family became quite self-sufficient and to a great extent traded butter and eggs and later, fruit and vegetables for products not produced on the ranch. In 1860, George Foulks, from clippings his mother brought with her from Ohio, started the first vineyard in this area, one acre of Mission grapes.

George continued his education in the Elk Grove area and later attended Healds Business College in San Francisco. After leaving school, he joined his brother in Verdi Nevada where he was employed by the

Central Pacific Railroad as a station agent and operator and also worked in the sawmill and lumber industry for several years

In 1881, George returned to the home ranch and again took up farming and ranching. He continued to expand his grapes to about seventy acres while the rest of the ranch was devoted to general farming and raising livestock.

When Euphemia Foulks first arrived, water was needed so her youngest, George Foulks, dug a well. It was necessary for him to dig only six feet to get water for the stock. Today, one would have to dig from 60 to 100 feet. In 1885, he installed one of the first steam pumping plants in Sacramento County. Grape brush was used as fuel. Later, a 20 h.p. steam engine and a centrifugal pump were installed.

George Foulk not only was a pioneer in the grape industry but also was founder of the Elk Grove Grape Growers Association. He also led the Elk Grove District as Director of the Farmers' Protective Association; and served as one of the first Trustees of the Elk Grove Union High School District. Along with his son, Guy George Foulks, helped establish the Elk Grove Park. George dearly loved his home and his heart and mind were absorbed in the betterment of Elk Grove and its surroundings. Even at 80 years of age, he spent much time and energy in the endeavor to beautify Elk Grove Park and almost to the time of his death was constantly working to improve the park.

In 1886, George built a large, beautiful, two-story, Italianate Victorian home for his 24-year-old bride, Miss. Nellie Griffin. They were married on September 1, 1886. George and Nellie had two children, Guy George born in 1887 and Dana, born in 1889. Unfortunately, Nellie died four years after the marriage on November 15, 1890

The house was designed by Nathaniel Goodell, the same architect and builder of the Governor's Mansion in Sacramento and the 1860's historical Rosebud Farm near Hood, California. According to the Foulks descendants, the house contained large rooms with 12 foot ceilings, a main floor, an upstairs, full basement and attic space. It had a front entry that leads into a small foyer; at the right was a grand staircase with a wonderful mahogany banister. Under the staircase was a walk-in closet housed a crank telephone. To the left was the living room with its beautiful bay windows from the ceiling down to the floor. Straight back was a large dining room, the setting for innumerable family dinners. At the side of the dining room was a bedroom with a bathroom added onto it in what had originally been a storage closet. That room opened out to a lattice-covered patio that hosted a cascade of wisteria that bloomed each spring. At the back of the main floor was the big kitchen with its walk-in pantry and long, narrow service porch. Entry stairs led up to the front of the house, side dining room and back door into the kitchen. Upstairs had a large master bedroom with another great bay window and walk-in closet. Directly behind that and at the back was another large bedroom of about equal size. There was a large bathroom, another small bedroom and a tiny room made into a bedroom with bunk beds that faced the front of the house. The cellar, or basement, was dug out under the full length and width of the house; it contained cold storage for foods and old furniture, trunks of clothes and other odds and ends. The basement also contained the furnace works, which were installed long after the house was built.

The house still remains on the property shielded mostly from view by the large oaks on either side of the long driveway.

Guy G. Foulks followed in his father's footsteps continuing with the tradition of living at the Foulks Ranch and helping his father run the ranch. His love affair with Elk Grove became more intense as he grew from a child to a young man. Guy graduated from Elk Grove Union High School in 1906, along with three other boys. The class originally had five students, four boys and one girl. L. Elizabeth "Bess" Graham. Bess was the grandchild of the early day pioneers who farmed about 2500 acres in Elk Grove from 1859 until 1891. Her parents, Frank and Mary Graham, ran the Elk Grove Hotel and Stage

Stop where she was born. Although Bess had to move to Sacramento before graduating from Elk Grove Union High School, it was said that Guy and Bess were sweethearts from the first day they met. Bess graduated from Sacramento High School and continued her education at Humphrey College in Stockton (now University of the Pacific) obtaining her teaching credential. After teaching for five years, Guy and Bess were married on December 14, 1911. They immediately took up residence in the "big house" on the Foulks Ranch. Three children were born, George Washington, Mary Elizabeth (Mauger) and Hazel Vaughan (Wickert).

Guy became an active member of the Native Sons of the Golden West (NSGW) both in Elk Grove, serving as President of the Elk Grove Parlor, and the state level, rising to the position of Governor General of the California Assembly. It was Guys' creativity and determination that led the NSGW to sponsored the first Oratorical Contest in 1914. Also through NSGW, Guy, along with the late Judge Philip Wilkins, established a Cleft Palate Clinic at University of California in San Francisco in the 1940's. Guy and his father helped established Elk Grove Park, the first in Sacramento County, and Guy was a member of the Elk Grove Park Board, the Elk Grove Fruit Growers' Association and the Elk Grove Winery (until prohibition shut it down). Guy and Bess started the Valley Investment Company in the 1930's, one of the first automobile financing companies in Sacramento County. Guy purchased the Oldsmobile agency in Sacramento and operated it as the Foulks Motor Company from 1936 to 1975.

Bess Foulks, as a rancher's wife, found herself cooking and feeding a large group of ranch hands three meals a day, taking care of the house and children, gardening and caring for the grounds surrounding the family home. She was active at the children's school and, with other mothers, provided hot soup and chocolate to drink for lunch. They brought the lunch to school in five-gallon milk cans. Bess served as PTA president, helped to start the Elk Grove Book Club that is still going today, was an avid reader and bridge player and was active in the Elk Grove Community Church.

Guy was born in the big house on the Foulks Ranch and it was his wish to die in the house on the ranch that he loved so dearly. This he did at age 86 in 1973. The Foulks Ranch (Oakwood) was home to Bess for 63 years of their marriage; she left the ranch after Guy's death, moving to Sacramento near her daughter Mary Foulks Mauger, returning to Elk Grove before her death in 1985 at age 96.

Taxes kept increasing. Land, which was worth two dollars an acre in 1853, twenty dollars an acre in 1939 and worth two thousand dollars an acre 1965. Part of the cause of the raise was that Valley Hi Country Club was built next door. The taxes often were more than the gross receipts. The final sale dealings on the ranch were completed in May 1966. An era was over. The agreement allowed Guy and Bess Foulks to occupy the house and five acres during their lifetime. In 1970, George Foulks purchased five acres back including the buildings.

For several years after Guy's death, the Foulks Ranch was rented but eventually Linda (Foulks) Cambell, the Great-Great Granddaughter of Euphemia Foulks, and her husband, Brady, moved back into the 1886 house leasing out the original 1853 house.

Tom Russell  
8577 Allister Way  
Elk Grove, CA 95624  
Phone: 916/686-5258  
Email: [eghistorical@comcast.net](mailto:eghistorical@comcast.net)

**APPENDIX 4**

**Site Record**

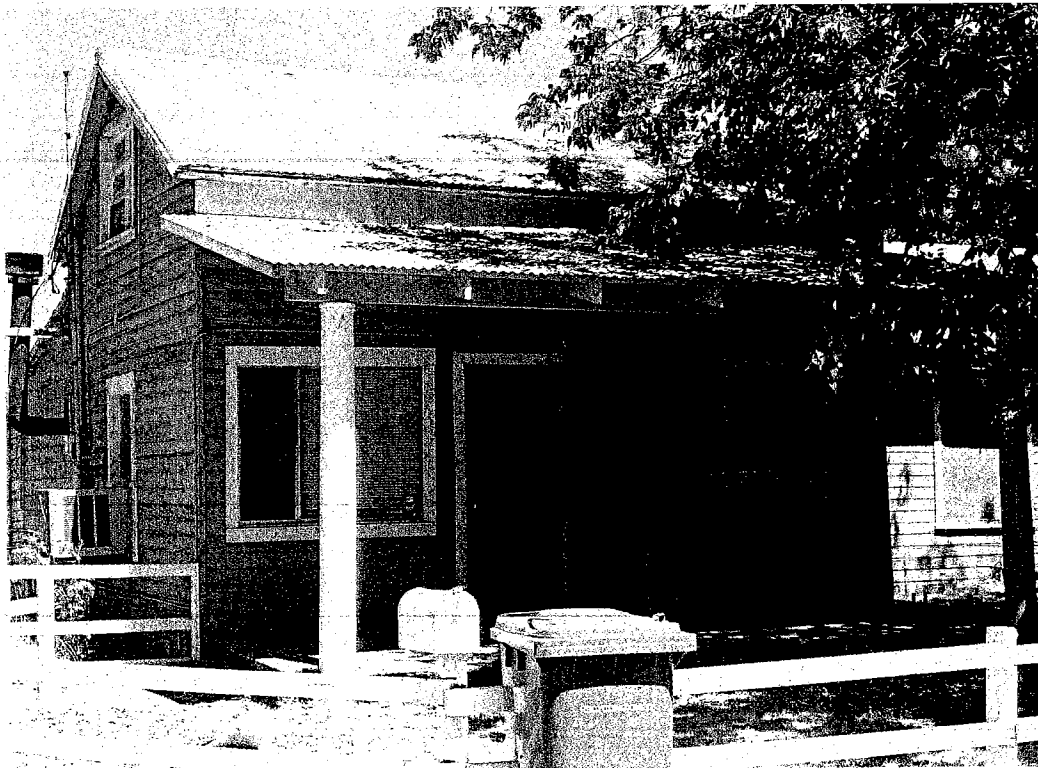
State of California - The Resources Agency  
DEPARTMENT OF PARKS AND RECREATION  
PRIMARY RECORD

Primary # \_\_\_\_\_  
HRI# \_\_\_\_\_  
Trinomial \_\_\_\_\_  
NRHP Status Code \_\_\_\_\_

Other Listings: \_\_\_\_\_  
Review Code: \_\_\_\_\_ Reviewer: \_\_\_\_\_ Date: \_\_\_\_\_

Page 1 of 15 Resource Name or #: (assigned by recorder) Foulks Ranch District

- P1. Other Identifier:** Oakwood
- P2. Location:**  Not for Publication  Unrestricted (P2b and P2c or P2d. Attach a Location Map as necessary)
- a. County: Sacramento
- b. USGS 7.5' Quad: Florin Date: 1968 (PR80) T. 7N ; R. 5E ; SW 1/4 of SW 1/4 of Sec. 34 ; MD B.M.
- c. Address: City: Elk Grove Zip: \_\_\_\_\_
- d. UTM: (Give more than one for large and/or linear resources)  
Zone: 10 ; Pt. A = 06 37 620 mE/; 42 52 490 mN  
Pt. B = 06 37 710 mE/; 42 52 490 mN  
Pt. C = 06 37 700 mE/; 42 52 385 mN  
Pt. D = 06 37 615 mE/; 42 52 365 mN
- e. Other Locational Data: (e.g. parcel #, directions to resource, elevation, etc., as appropriate)  
North of Elk Grove Boulevard about one-quarter mile east of Bruceville Road.
- P3a. Description:** (Describe resource and its major elements. Include design, materials, condition, alterations, size, setting, and boundaries) See District Record
- P3b. Resource Attributes:** (List attributes and codes) HP2, Single family property; HP33, Farm/ranch
- P4. Resources Present:**  Building  Structure  Object  Site  District  Element of a District  Other (Isolates etc.)



**P5b. Description of Photo:** (View, date, accession #)  
1854 cabin (with numerous additions) looking NNE, 8/9/04

**P6. Date Construction/Age and Sources:** Historic   
Prehistoric  Both

**P7. Owner and Address:**

**P8. Recorded By:** (Name, affiliation, and address)  
Robert Gerry  
Peak & Associates, Inc.  
3941 Park Drive, Suite 20, #329  
El Dorado hills, CA 95762

**P9. Date Recorded:** 8/9/04

**P10. Survey Type:** (Describe)  
Complete, Project Related

**P11. Report Citation:** (Cite Survey report and other resources, or enter "none") Peak & Associates, Inc., 2004, Cultural Resource Assessment of the Foulks Ranch Project, Elk Grove, Sacramento County, California

**ATTACHMENTS:**  NONE  Location Map  Sketch Map  Continuation Sheet  Building, Structure, and Object Record  
 Archaeological Record  District Record  Linear Feature Record  Milling Station Record  Rock Art Record  
 Artifact Record  Photograph Record  Other: Primary Records for individual structures

Resource Name or # (Assigned by recorder) Foulks Ranch

D1. Historic Name: Foulks Ranch (Oakwood) D2. Common Name: Foulks Ranch

D3. **Detailed Description:** (Discuss overall coherence of the district, its setting, integrity and minor features. List all elements of district.)  
The district incorporates the residences and out buildings associated with Foulks Ranch, a farm, dairy, vineyard, and ranch (at various times) occupied and run by members of the Foulks family from 1852 to the present. This relationship to the family is about all that makes the district coherent. Otherwise, the buildings date to a variety of eras, the four mobile homes on the property contrast with the main house, an eye catching two story Italianate. The setting has been severely compromised because the bulk of the ranch was sold in 1966 and developed to single family residences and, very close to the district on the west, by a tennis club. The structures incorporated into the district are:

**Foulks 1** This is the 1886 Italianate residence that is the showpiece of the property. Although modified over the years, it is in good repair.

**Foulks 2** This is an old nondescript wood frame shed located just north and west of Foulks 1. It is almost buried in vegetation and is in very poor repair.

**Foulks 3** Immediately to the north of Foulks 2 is a long narrow structure of various materials. It appears to have been added to as needed over the years, to the point that it is difficult to say which portion is the original structure. It shows a wide variety in quality of construction as well.

**Foulks 4** This is the concrete swimming pool. It measures 44 by 22 feet with a concrete apron all around. There is a shed for pumps and equipment on the east side.

**Foulks 5** Adjoining Foulks 4 on the north is a building that is rumored to be a former Elk Grove school house that was moved to the property in the early 1900s. It served as a clubhouse and dance house associated with the pool.

**Foulks 6** Is a garage located north of the main house and east of Foulks 3. It is a simple frame structure with gabled roof.

**Foulks 7** Is a very long, narrow shed that appears to be a combination of several structures of different construction dates, similar to Foulks 3.

**Foulks 8** This house includes the original 1854 residence on the property. There have been numerous modifications and additions over the years. Historic photographs indicate that the original residence was a rectangular two-story frame side gabled structure with a small flat roof over the entry and a short section on the north covered by an extension of the main roof at a shallower pitch. There is now another shed roofed extension to the back, a full width front porch, a low shed attached to the north side of the house and, on the east, a one story gabled segment.

**Foulks 9** This is a wood frame, two car garage with top-hung sliding wood doors and a flat roof.

**Foulks 10** This is a typical long, narrow shed for storing farm equipment. It has four bays, three of them open to the north, the direction that is away from the other structures and was toward the fields.

**Foulks 11** This concrete cistern is located just north of Foulks 10. It is circular with a low curbing about ten feet in diameter around a tank five feet high and eight feet in diameter.

...and the four mobile homes mentioned above. All of these structures are mapped on the attached sketch map and the numbered features are described in individual primary records.

D4. **Boundary Description:** (Describe limits of district and attach map showing boundary and district elements.)  
Straight lines enclosing the buildings described above, which are quite concentrated as it is.

D5. **Boundary Justification:**  
There is no reason to drop any buildings out of the district since they all are related to the agricultural operation as owner's residences and out buildings, farm-related out buildings or worker's housing. There is also no reason to incorporate a wider area, since all farming features in the portion of the property sold in 1966 are thoroughly destroyed.

D6. **Significance: Theme** Agriculture **Area** Southern Sacramento County  
**Period of Significance** 1852-? **Applicable Criteria** none (Discuss district's importance in terms of its historical context as defined by theme, period of significance, and geographic scope. Also address the integrity of the district as a whole.)

We do not believe that the Foulks Ranch, as a district, satisfies any of the criteria of significance. Taken as a whole, the assemblage of buildings at Foulks Ranch does not qualify for the California Register. They do not satisfy any of the Criteria for inclusion. The farm has been in agricultural production, of one variety or another, for many years, but this is not unusual or unique. There are no known historical events of unusual importance associated with the ranch. Similarly, the Foulks family have lived on the property for many years, but this does not necessarily make them historically significant. They have been farmers, dairymen, herdsman and viticulturalists, but they were never unusually important in a community that featured several families that fit that description. The buildings of the ranch present a wide variety of types, periods and methods (not to mention quality) of construction and are not typical of this region in contrast to neighboring areas.

D7. **References:** (Give full citations including names and addresses of any informants, where possible.)

D8. **Evaluator:** M. Peak, R. Gerry **Date:** 8/25/04  
**Affiliation and Address:** Peak & Associates, Inc., 3941 Park Drive, Suite 20-329, El Dorado Hills, CA 95762

