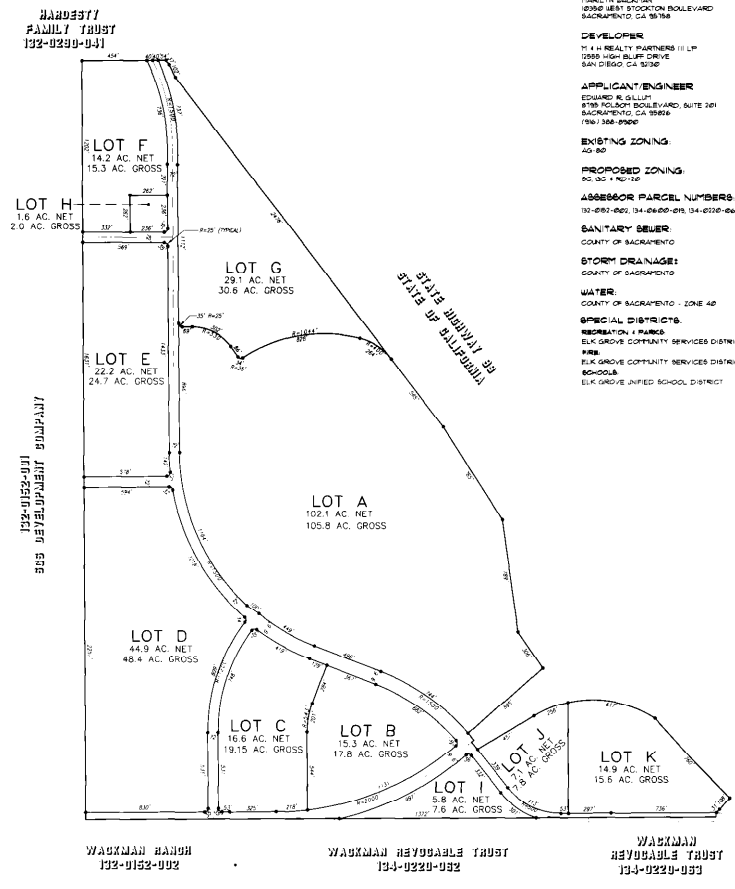


MOUNT BARKLEY MARKETPLACE

TENTATIVE SUBDIVISION MAP
 PARCEL 2, BOOK 146 OF PARCEL MAPS, PAGE 22
 TOGETHER WITH A PORTION OF THE SW 1/4 SECTION
 7, AND A PORTION OF THE NW 1/4 AND THE NE
 1/4 OF SECTION 18, T.6N., R.6E., M.D.M.
CITY OF ELK GROVE, CALIFORNIA
 JANUARY, 2001 SCALE: 1"=300'

GENERAL NOTES

- OWNERS**
 T-14 REALTY PARTNERS II LP
 2550 HIGH BLUFF DRIVE
 SACRAMENTO, CA 95834
- ROBERT AND LISA LENT**
 6950 WEST STOCKTON BOULEVARD
 SACRAMENTO, CA 95834
- MARLYN WICKMAN**
 6950 WEST STOCKTON BOULEVARD
 SACRAMENTO, CA 95834
- DEVELOPER**
 T-14 REALTY PARTNERS II LP
 2550 HIGH BLUFF DRIVE
 SACRAMENTO, CA 95834
- APPLICANT/ENGINEER**
 EDWARD R. GILLUM
 8750 KOLBORN BOULEVARD, SUITE 201
 SACRAMENTO, CA 95824
 (916) 368-9500
- EXISTING ZONING**
 ZS-80
- PROPOSED ZONING**
 RS-30 (1) 70' WFS
- ASSESSOR PARCEL NUMBERS**
 132-0220-001, 134-0220-001, 134-0220-002, 134-0220-003
- SANITARY SEWER**
 COUNTY OF SACRAMENTO
- STORM DRAINAGE**
 COUNTY OF SACRAMENTO
- WATER**
 COUNTY OF SACRAMENTO - ZONE 4B
- SPECIAL DISTRICTS**
 RECREATION - 4 PARCS
 ELK GROVE COMMUNITY SERVICES DISTRICT
 FIRE
 ELK GROVE COMMUNITY SERVICES DISTRICT
 SCHOOLS
 ELK GROVE UNIFIED SCHOOL DISTRICT

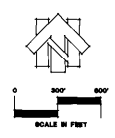
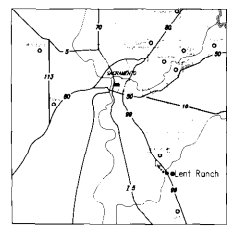


WACKMAN RANCH TRUST
132-0220-001

WACKMAN REVOCABLE TRUST
134-0220-002

WACKMAN REVOCABLE TRUST
134-0220-003

WACKMAN REVOCABLE TRUST
134-0220-003



EDWARD R. GILLUM
 ENGINEERING CONSULTANT

8750 KOLBORN BOULEVARD, SUITE 201
 SACRAMENTO, CALIFORNIA
 (916) 368-9500